

**Offices**  
 #0410  
 -0400  
 Milton Keynes  
 #0150

12 Warren Yard,  
 Warren Park,  
 Milton Keynes,  
 MK12 8NW  
 01908 305 246  
 info@prcgroup.com  
 www.prcgroup.com

Revisions:  
 A. Red line amended to new secondary vehicle access location update

Drawn/Chd: ASC Date: NOV 23

Client: ARA EUROPE, NORTHLAND  
 Project: GLOUCESTER BUSINESS PARK  
 Drawing Title: PLOT 3 & 4 SITE LOCATION PLAN

Scale @ A3: 1:500  
 Job No: 11537  
 Checked by: ME  
 Stage: PL  
 Date: JAN 23  
 Drawing No: 003  
 Rev: A

Construction Approval  Preliminary Tender  Information

**PRC**

PRC Architecture & Planning

© Plotted dimensions only are to be used. All dimensions to be checked on site. Differences between drawings and between drawings and between drawings and specifications or bills of materials to be resolved to the PRC Group. The copyright of the drawings and designs contained herein remains vested in the PRC Group.



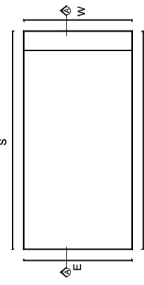


Final dimensions will vary by site. All dimensions to be checked onsite.  
 Dimensions to be checked to the face of the building unless otherwise stated.  
 The availability of the materials and design elements shown herein is  
 verified by the PRC Group.

Revision: **Rev 11/11/21** Drawn/Checked: **DJA/PL**

**MATERIALS KEY**

- 1 HORIZONTAL PROFILED CLADDING (SLATE GREY)
- 2 HORIZONTAL PROFILE CLADDING (SILVER GREY)
- 3 HORIZONTAL PROFILE CLADDING (ANTHRACITE GREY)
- 4 ALUMINIUM FRAMED WINDOWS (ANTHRACITE GREY)
- 5 ALUMINIUM FRAMED ENTRANCE DOORS AND GLAZING (ANTHRACITE GREY)
- 6 MAIN ENTRANCE FEATURE (SILVER AND GREEN)
- 7 HORIZONTAL PROFILED WEL DOORS (ANTHRACITE GREY)
- 8 GLAZING BAY ACCESS (ANTHRACITE GREY)
- 9 STEEL BOLLARD (YELLOW)
- 10 DOCK LEVELLER (ANTHRACITE GREY)
- 11 COMPOSITE CLADDING (SLATE GREY)
- 12 PROFILED ROOF CLADDING (SILVER AND GREEN)
- 13 GLAZED ENTRANCE CANOPY
- 14 OBTURED GLAZED PANEL
- 15 BACKLIT UNIT NUMERAL (SILVER)
- 16 HORIZONTAL PROFILED CLADDING (MOORLAND GREEN)



**PRC**  
 Client: **AMA EUROPE NORTHLAND**

Project: **G. CAUDESTER BUSINESS PARK**  
 22 Watney Road, Milton Keynes, MK11 3LW, UK  
 0114 335 114  
 info@prcgroup.com  
 www.prcgroup.com

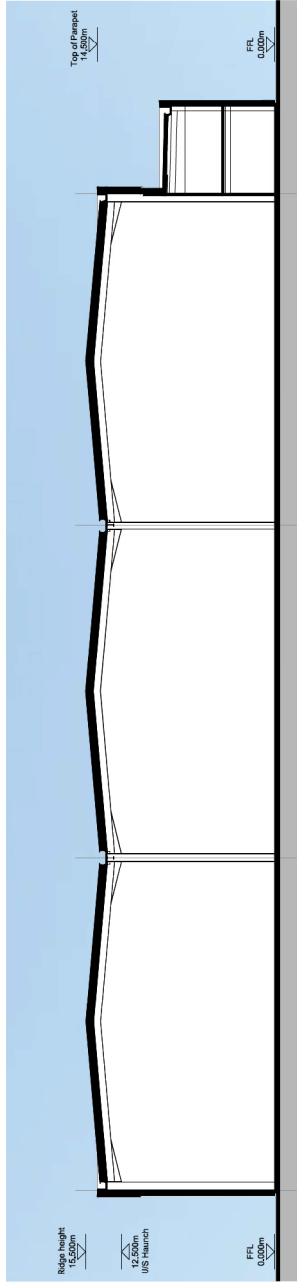
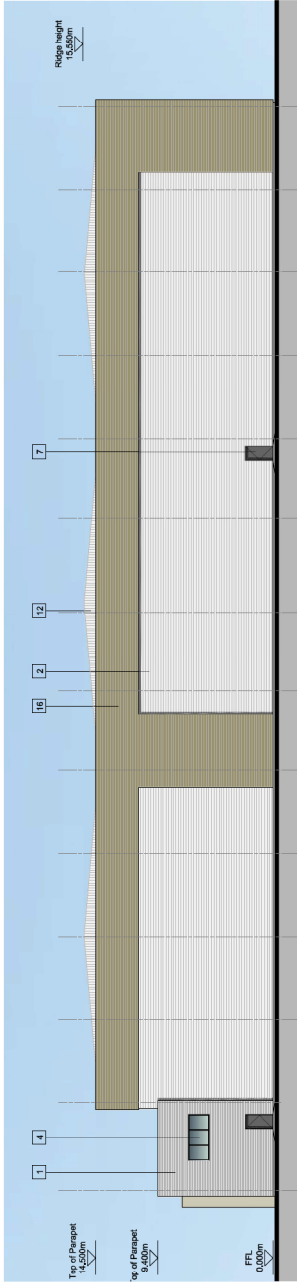
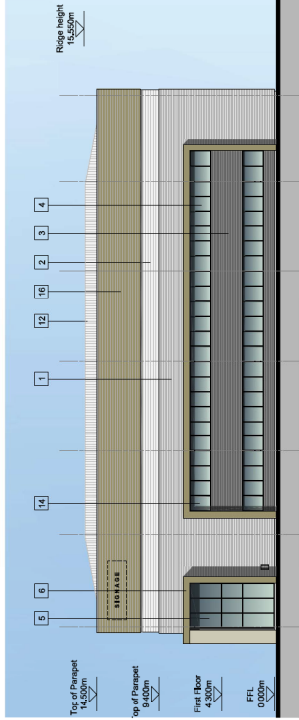
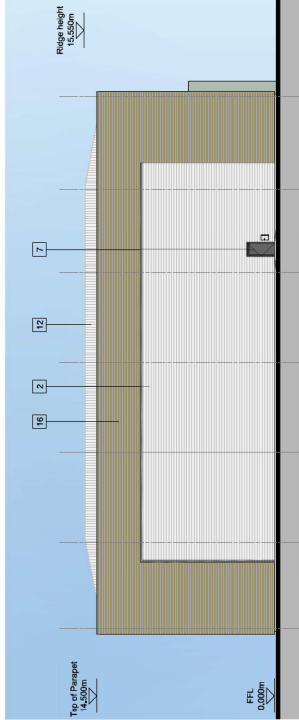
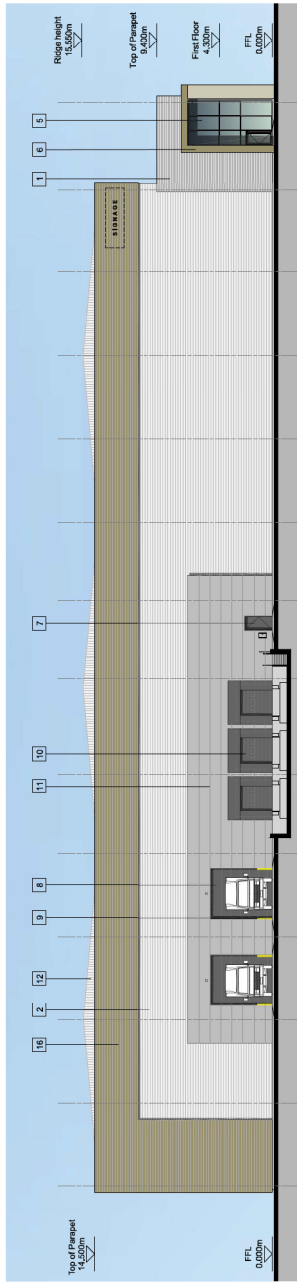
Drawing Title: **UNIT 3 & PROPOSED ELEVATIONS AND SECTION**  
 Drawing No: **1-537**  
 Date: **JAN 23**  
 Created by: **ME**  
 Checked by: **ME**  
 Scale: **1:500**  
 Drawing No: **PL\_003**

Architect: **PRC**  
 Planning:   
 Master Planning:   
 Structure:   
 Landscape:

Offices:  
 London  
 Milton Keynes  
 Worcester

Mark Dates:  
 Consultation:   
 Pre-Approval:   
 Approval:   
 Tender:

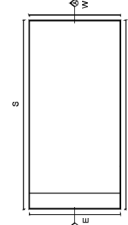
**PRC Architecture & Planning**



Final elevations shall be based on the final approved drawings. All dimensions to be indicated on the drawings shall be to the face of the work unless otherwise stated. The client shall be responsible for the accuracy of the information provided in this document.

Drawn: **CHD**, Date: **11/11/2023**

- MATERIALS KEY**
- 1 HORIZONTAL PROFILED CLADDING (SLATE GREY)
  - 2 HORIZONTAL PROFILED CLADDING (SILVER GREY)
  - 3 HORIZONTAL PROFILED CLADDING (ANTHRACITE GREY)
  - 4 ALUMINUM FRAMED WINDOWS (ANTHRACITE GREY)
  - 5 ALUMINUM FRAMED ENTRANCE DOORS AND GLAZING (ANTHRACITE GREY)
  - 6 MAIN ENTRANCE FEATURE (MOORLAND GREEN)
  - 7 STEEL PERSONNEL DOORS (ANTHRACITE GREY)
  - 8 CONCRETE WALLS (ANTHRACITE GREY)
  - 9 STEEL BOLAND (YELLOW)
  - 10 DOCK LEVELLER (ANTHRACITE GREY)
  - 11 COMPOSITE CLADDING (SLATE GREY)
  - 12 PROFILED ROOF CLADDING (SILVER GREY)
  - 13 GLAZED ENTRANCE CANOPY
  - 14 OBSCURED GLASS PANEL
  - 15 BACKLIT UNIT NUMERAL (SILVER)
  - 16 HORIZONTAL PROFILED CLADDING (MOORLAND GREEN)



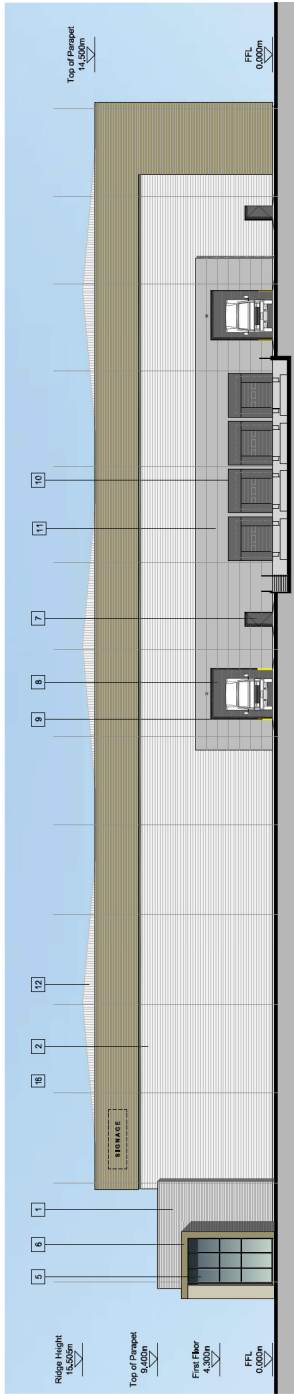
**PRC**  
 CLIENT: **AMA EUROPE NORTHLAND**

PROJECT: **G. CAUCESTER BUSINESS PARK**  
 22 Waverley, Millers Green, Gloucester, G11 3 146  
 01452 315 146  
 info@prcgroup.com  
 www.prcgroup.com

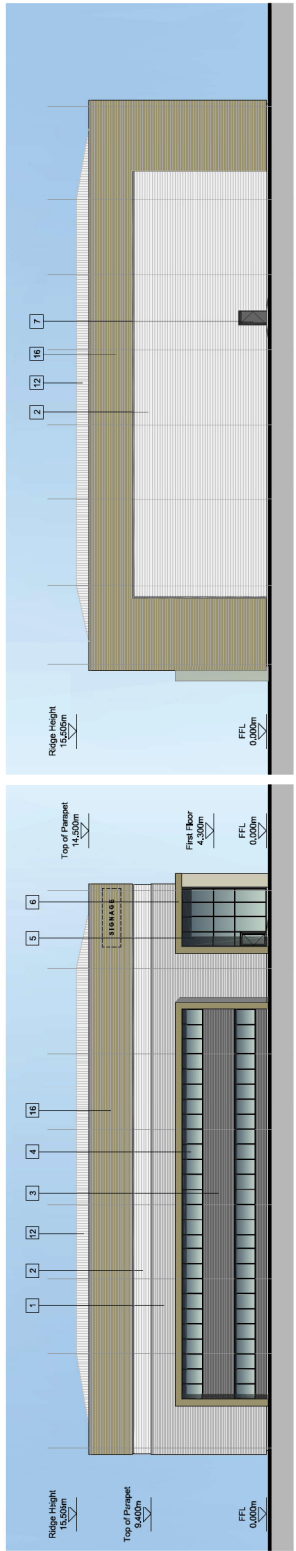
Drawing Title: **UNIT 4, 5 PROPOSED ELEVATIONS & SECTION**

Architect	
Planning	Theming
Site No: 1200	Created by: ME
Master Planning: JUN 23	Date: JUN 23
Structure: JUN 23	Master Planning: JUN 23
Interior: JUN 23	Master Planning: JUN 23
Landscaping: JUN 23	Master Planning: JUN 23
JAN: 1:537	Sheet No: PL_005

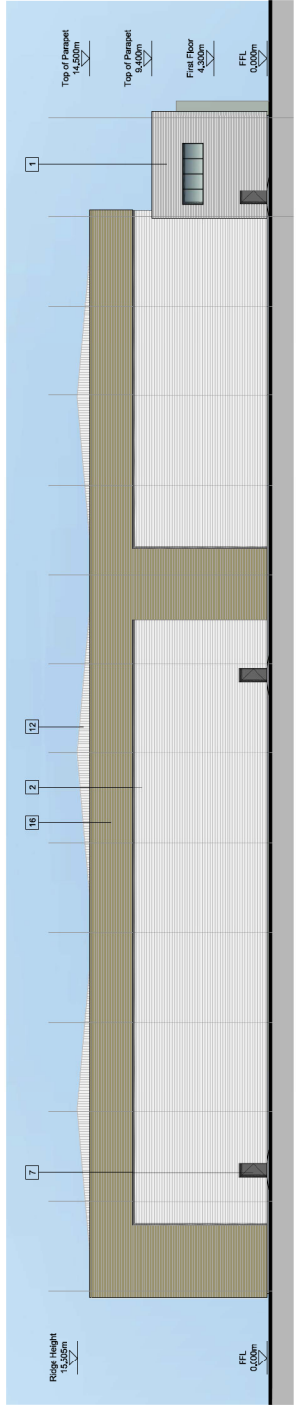
Office: **PRC Architecture & Planning**  
 London  
 Approval:  Approved  
 Checked:  Checked  
 Drawn:  Drawn



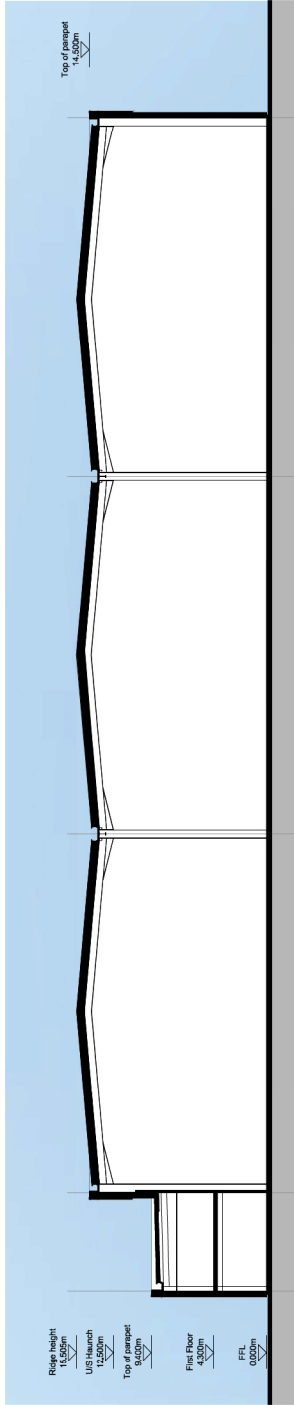
NORTHERN ELEVATION



EASTERN ELEVATION



WESTERN ELEVATION



TYPICAL LONG SECTION



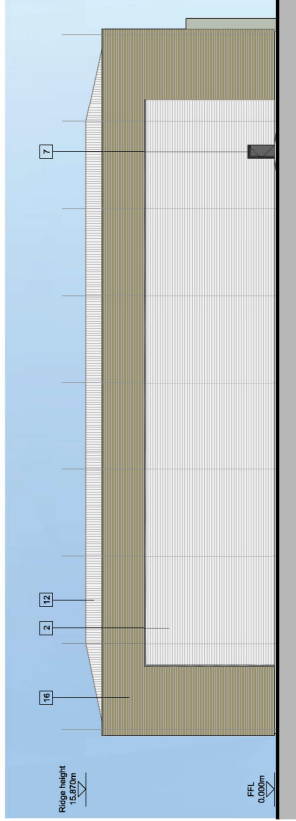
Final dimensions shall be based on the final design. All dimensions to be checked on site. Dimensions to be checked on site. All dimensions to be checked on site. All dimensions to be checked on site.

Drawn: CHD Date: 11/11/2021

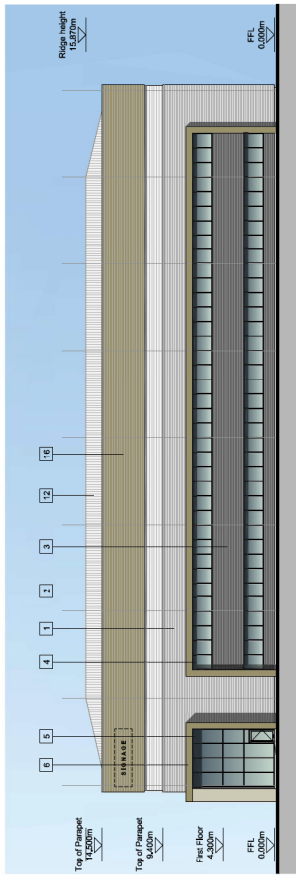
- MATERIALS KEY:**
- 1 HORIZONTAL PROFILED GLASSING (SLATE GREY)
  - 2 HORIZONTAL PROFILED GLASSING (SLATE GREY)
  - 3 HORIZONTAL PROFILED GLASSING (ANTRACITE GREY)
  - 4 ALUMINIUM FRAMED WINDOWS (ANTRACITE GREY)
  - 5 ALUMINIUM FRAMED ENTRANCE DOORS AND GLAZING (ANTRACITE GREY)
  - 6 MAIN ENTRANCE FEATURE (MOORLAND GREEN)
  - 7 STEEL PERSONNEL DOORS (ANTRACITE GREY)
  - 8 GLAZED ENTRANCE CANOPY (ANTRACITE GREY)
  - 9 STEEL BOLLARD (YELLOW)
  - 10 DOOR LEVELLER (ANTRACITE GREY)
  - 11 HORIZONTAL PROFILED GLASSING (SLATE GREY)
  - 12 PROFILED ROOF GLAZING (GOOSEWING GREY)
  - 13 GLAZED ENTRANCE CANOPY
  - 14 OBSCURED GLASS PANEL
  - 15 BACK-LIT UNIT NUMERAL (SILVER)
  - 16 HORIZONTAL PROFILED GLASSING (MOORLAND GREEN)



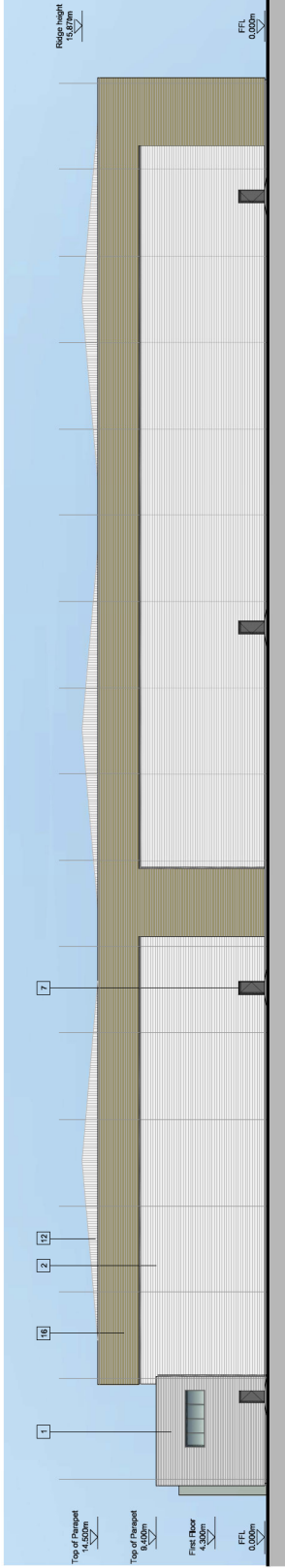
NORTHERN ELEVATION



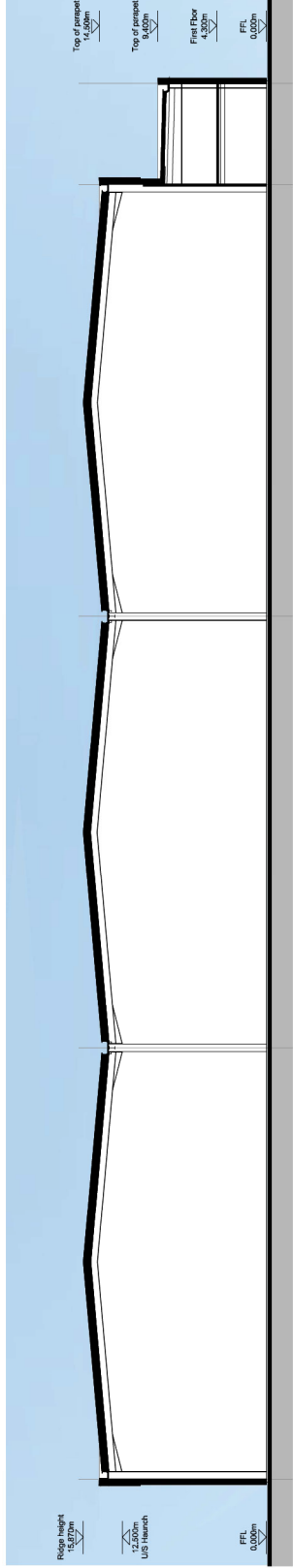
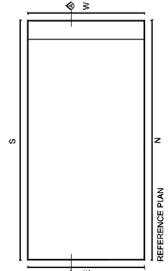
EASTERN ELEVATION



WESTERN ELEVATION



SOUTHERN ELEVATION



TYPICAL LONG SECTION

**PRC**

CLIENT: ABA EUROPE NORTHLAND

PROJECT: G. CAUDESTON BUSINESS PARK

22 Watney Way, Milton Keynes, MK11 3JL, UK  
01235 335 144  
info@prcgroup.com  
www.prcgroup.com

Drawn by: CHD  
Checked by: CHD  
Date: 11/11/2021

Architecture Planning Master Planning Interiors Landscape

Scale: 1:200  
Drawing No: PL\_046

Issue Status:  
 Preparation  
 Approval  
 Issued  
 Revisions

Offices:  
 London  
 Milton Keynes  
 Worcester

PRC Architecture & Planning